

Gogoshima Fieldwork

ごごしま
興居島

フィールドワーク

10月25日(土)

9:30~16:45

Notice: The time may change.

The Chuyo Regional Office in Ehime holds 6 fieldwork activities for foreigners living in Ehime.

The goal is to help them learn about local culture and feel more connected to Ehime.

As the fourth fieldwork, feel the charm of Gogoshima (Matsuyama City) through this activity!

Organizer

Ehime Prefecture

Cooperation

Institute for International Relations(IIR),
Ehime University

Place

Gogoshima , Matsuyama City

Fee

1,000 yen (transportation and lunch included)

Target

Foreign residents living in Ehime Prefecture
(20 participants max)

CONTACT

Tobu Top Tours Co., Ltd.

Contact persons: Ms. Nohara and Ms. Yabuuchi

050-9002-5466

080-8172-2716 (mobile)

ayana_nohara@tobutoptours.co.jp

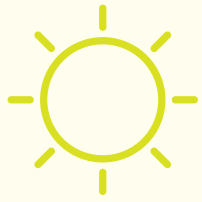
※Phone support is available in Japanese only.



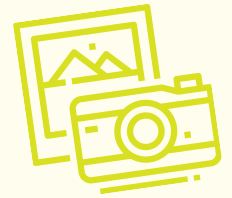
Scan here to apply!



Deadline: October 3(FRI), 5:00PM



Gogoshima Fieldwork



A.M.
9:00

Meet at Iyotetsu Matsuyama-shi Station



25 minutes by train

(Departs at 9:15)

A.M.
9:55

Go to Yura Port by Gogoshima Ferry



13 minutes by ferry



A.M.
10:40

Experience Suigun Taiko Drumming !



Get around on a rental bicycle.

A.M.
12:15

Enjoy a handmade bento from the island!



About 10 minutes on foot



P.M.
1:10

Visit Benzaiten Shrine

that juts out into the sea!

P.M.
1:30

Take a relaxing walk through Yura!



About 15 minutes on foot

P.M.
3:35

Take a ferry from Yura Port
to Takahama Port



13 minutes by ferry

P.M.
4:13

Take a train from Takahama Station
to Matsuyama-shi Station and

the fieldwork will end there at 4:45PM



Recommended Points

- Take a ferry to visit the island! It's only a 15-minute ride — perfect for a quick trip to the island.
- Experience Suigun Taiko, a traditional culture experience of Gogoshima!
- Enjoy a refreshing bicycle ride along the scenic coastal roads!